

FREE

Inn Touch



Campaign
for
Real Ale

Rotherham CAMRA's magazine
Summer 2023 - Iss. 54

Celebrating 30 Years of
Rotherham CAMRA branch



SCAN ME

Subscribe for free NOW!
Scan the QR code to get the
digital version sent to your
inbox every quarter.



TRY A TASTE *of* TRADITION



FARMERS ALES FROM BRADFIELD BREWERY



Follow us on social media
for the latest news and offers

On-Site Brewery Shop open:
8am-4pm Monday to Friday
and 10am-4pm on Saturdays.

Tel: 0114 2851118
info@bradfieldbrewery.com
www.bradfieldbrewery.com

Rotherham CAMRA

A note from the Chairman

We're thrilled to celebrate 30 years of the Rotherham CAMRA branch this year. It's hard to believe that we started back in 1993. We hope you enjoy reading this issue of Inn Touch and would love to see you at our next event. There's lots of ways to get involved with Rotherham CAMRA. Hopefully see you soon.

Steve Burns



stephenburns1@sky.com

A note from the Editor

I hope you enjoy this issue of Inn Touch. See Paul Redfern's article for the history of the branch (p7), Daniel Thompson's photos of the 30th anniversary meeting at the Bridge Inn (p10), a guest blog post from Micropub Adventures (p14), and how to get involved with Rotherham CAMRA from Graeme Manning (p4).

Sam Warburton



samwarburton.contentcreator@gmail.com

Contents

Rotherham CAMRA news	04
Music scene	12
Micropub Adventures	14
Learn & discover	20
Real fun	23

Find out more!

rotherhamcamra.org.uk

 @RotherhamCAMRA

30 yrs

Front cover
photo credit:
Daniel Thompson



Want to get involved?

To advertise with us, submit a press release, or contribute to our editorial, please email samwarburton.contentcreator@gmail.com



Something BREW INN

2 Stock's Lane, Rawmarsh, Rotherham, S62 6NL

Est in 2018, selling a range of real ales, premium lagers, wines and spirits. We have a beer garden to the rear and are dog-friendly. A small pub with a huge welcome!

**THREE ROTATING REAL ALES,
LIVE MUSIC & MORE**

OPENING TIMES

Check on Facebook
@ Something BREW INN

QUIZ NIGHTS

Wed evenings: General Knowledge
Thurs evenings: Music Quiz



**10%
DISCOUNT ON
REAL ALES FOR
CAMRA MEMBERS**

How to get involved with Rotherham CAMRA

A note from Graeme Manning,
Rotherham CAMRA Committee Member (Communications)

Members Branch Meetings

Generally on the 3rd Wednesday each month. Meeting venue changes each month. Check on the Facebook page / website for exact dates for the meetings and the venues. Social media is updated daily as new information becomes available - check regularly in case there have been amendments to the dates and venues.

Facebook Page

On Facebook, we share our upcoming events, reports of current local awards for pubs & clubs in the Rotherham area, reports / photographs from selected Ale trips & past events, and details for any local or national beer festivals.

Events

Details of branch meetings, usually the 3rd Wednesday in the month – check for actual venue, times, transport links, on the website Diary Dates section. Plus details for social events, train, bus and tram trips out. Details

of dates, meeting places and transport timings etc.

Also detailed under events are the important monthly Pub Survey trips. These are usually on the last Friday evening in any month. Check the page for exact date times / transport links / arrangements.

Website:

www.rotherhamcamra.org.uk
'Branch events' section gives all the details from the Facebook page, plus the minutes from the last branch meetings.

On our website, the 'Honours board' section gives details of the awards presented for current and previous years.

The website is also used for the scoring system for our local pubs and clubs – see the section 'score our pubs online' – available for all CAMRA members to be involved with the pub assessments. I.e., scoring towards any awards. The scoring is via branch members individually scoring pubs on



secprint

FOR ALL YOUR PRINTING NEEDS



Unit 24, Alexandra Centre,
Rail Mill Way, Parkgate, Rotherham, S62 6JE



Unit 24, Alexandra Centre,
Rail Mill Way, Parkgate, Rotherham, S62 6JE

We can produce:

Invoice Pads, Flyers, Business Cards,
Booklets, Duplicate Pads, Posters, Banners

& MUCH MORE!



www.secprint.co.uk | info@secprint.co.uk | 01709 780008

their days / evenings out, or via the Friday evening survey trips carried out once a month.

‘Real Ale in Rotherham’ – listings of the pubs in our area selling real ale.

Find local pubs that offer ‘CAMRA members discounts’ on real ale.

‘Get Inn touch’ – details of the officers of the branch, plus links to the online of this magazine.

‘Rotherham CAMRA beer festivals’ – Ideas please for 2023.

‘Chantry Brewery and Chantry Brewery Tap venue’ - details and contacts.

‘Magna’ – Rotherham Real Ale and Music Festival links to their Facebook and website (a separate organisation to Rotherham CAMRA).

‘Championship beers of Yorkshire’ – Winners and awards.



Congratulations Dragon's Tap (Stag Roundabout)

Winners of Rotherham CAMRA Micro Pub of the Year 2023 and Pub of the Season - Winter 2022/2023



30 Years of Progress for Rotherham CAMRA

By Paul Redfern,
with thanks to Graham
Cowley, Garry Bray,
Michael Fisher, and
Bryan Cutler for their
contributions to this article

The origins of the branch stemmed from a meeting of mostly railway workers, at the Bridge Inn, Rotherham in July 1992. At this time, Rotherham area members were part of the Sheffield branch and several members were unhappy with



the logistical problems of attending meetings & socials in the Sheffield area, and with the selection of Rotherham area pubs for the Good Beer Guide. A steering committee was established at this meeting.

In January 1993, the first Rotherham Oakwood Real Ale & Music Festival took place to raise funds for Oakwood School. The steering committee ran a stall at this event to promote the forthcoming formation of the branch and to raise funds for CAMRA.

A real ale newsletter, Rotherham Ale, was available at the festival and in a few pubs. In March, a further meeting was held at the Bridge.

The April meeting, also at the Bridge, saw the branch officially launched with the approval of the Sheffield branch. At this meeting, the branch membership stood at 50. Ten years later, it had passed the 300 mark and now it's over 800. Subsequent meetings were held in various venues around the district, including many that have now closed.

Branch involvement in the Oakwood Festival increased over the years and this continued with the Magna Real Ale & Music Festival, launched in 2011.

A fifth anniversary celebration took place at the Waverley in Catcliffe in

1998. A special beer was brewed by Tomlinsons of Pontefract called Chantry Celebration. There was no brewery in Rotherham District at that time.

However, the Wentworth Brewery started in 1999 and they brewed a special beer for the tenth anniversary party, held at the Bridge Inn in 2003. The Bridge was also chosen for the 20th anniversary event in 2013 and a special brew was produced by the Chantry Brewery, launched in 2012.

The success of the branch in supporting the Oakwood festival led to us being asked to help Swinton Comprehensive School and Wath Rugby Club establish beer festivals, where members manned the CAMRA stand and helped with setting up and serving beers.

The branch had long discussed the setting up of its own CAMRA festival and this became a reality in November 2012 when the New York Beer Festival was launched at the newly opened New York Stadium Football Ground.

Over the years, many memorable campaigning and social events have been organised by a succession of Social Secretaries, Joint events have taken place with other branches, including: Southport, Sheffield, Chesterfield, Doncaster, and Barnsley.

In 2005, Rotherham and Barnsley branches decided to have an annual fun sporting challenge. The first took place at the Rockingham Arms in Wentworth with crown green bowling as the chosen activity.

Other challenges have included: croquet, table tennis, darts, pool, cricket, duck racing, bowling, welly wanging, and Jenga. The winning branch is presented with the Wentworth Cup, and staging the next challenge.

The branch has done its fair share of campaigning, as well as the support & organisation of beer festivals, regular pub survey crawls for the Good Beer Guide have been organised and national CAMRA initiatives such as Mild in May, National Pubs Week/ Community Pubs Month, National Cider Month, Pub Prices Survey, Pub Closures Survey and Young Members events supported. The branch also assisted with campaigns to halt the demise of some pubs.

One of these was the Cutlers Arms in town, which was threatened with demolition but eventually became Grade II listed, thanks to the Civic Society. Another old pub threatened with demolition was the Rising Deer at Brampton-en-le-Morthern, closed in 2007. We supported the Parish Council and after successfully

halting the demolition, the pub eventually reopened 14 years later.

Rotherham Pub Scene

By Paul Redfern

Over at Swinton, the Rockingham Tap Micropub has an altered frontage and outside covered area, but continues to sell an ever changing real ale from Mexborough's Gorilla Brewery, plus craft beers and ciders.

The Woodman has applied to have a covered outside area to the rear. The Ring o' Bells offers an everchanging real ale, sometimes two, from local microbreweries. Recently, Abbeydale have been favoured. Further down the hill, the Robin Hood sells two real ales at the very competitive price of £2.50



a pint. All these pubs cater for a local crowd and can be lively at weekends.

In Kimberworth, the Colin has reopened under new management. The Cutler at North Anston returned to selling real ale earlier this year in the form of two Theakston beers (note: these are not

always available). Following an extensive refurbishment, the Bluebell at Wath has reopened and now has a pool table.

Something Brew Inn have had 3 real ale pumps for 4 years with sales increased by 40% in the last 3 months (note: this is a correction from a previous Inn Touch issue).

Rotherham CAMRA's 30th Anniversary Meeting Photos

Held at the Bridge Inn on Weds 19th April 2023 (8pm), Rotherham CAMRA branch celebrated their 30th anniversary meeting. Photos taken by Daniel Thompson.



CHANTRY BREWERY TAP BAR GIG LIST

Unit 2, Callum Court, Parkgate, Rotherham, S62 6NR



Fri 23rd Jun 2023
HANDSOME DAN & THE MAVERICKS



Sat 24th Jun 2023
PETER & THE TEST TUBE BABIES



Sat 1st Jul 2023
SPRINGSTEEN - EAST STREET BAND



Sat 8th Jul 2023
CHRIS HELME



Sat 15th Jul 2023
THE ROLLIN' CLONES



Sat 5th Aug 2023
80s PARTY NIGHT YAZOO 2 & ELEKTRIK VINYL



Fri 11th Aug 2023
CREDENCE CLEARWATER REVIVAL REVIVAL



Sat 22nd Jul 2023
THE STRANGLERS



Fri 25th Aug 2023
WHO'S NEXT - WHO TRIBUTE

SEE DETAILS ON OUR FACEBOOK

Chantry Brewery Tap Bar



Pint & Plectrum

Mick Hill's take on Rotherham's music scene



By Mick Hill

Just back from a fantastic concert in Glasgow to see Roger Waters,

Pink Floyd Legend - This is not a Drill tour.

Opening up with Comfortably Numb then onto The Happiest Days of Our Lives, Another Brick in the Wall part 2 & 3 off the legendary Wall album, followed by The Powers That Be off Radio KAOS, The Bravery Of Being Out Of Range, plus a new one called The Bar.

Then it was Have a Cigar, Wish You Were Here, and Shine On You Crazy Diamond with images of Syd Barrett on the massive



screen above. The first set came to an end with Sheep off the Animals album, with a flying sheep circulating the arena.

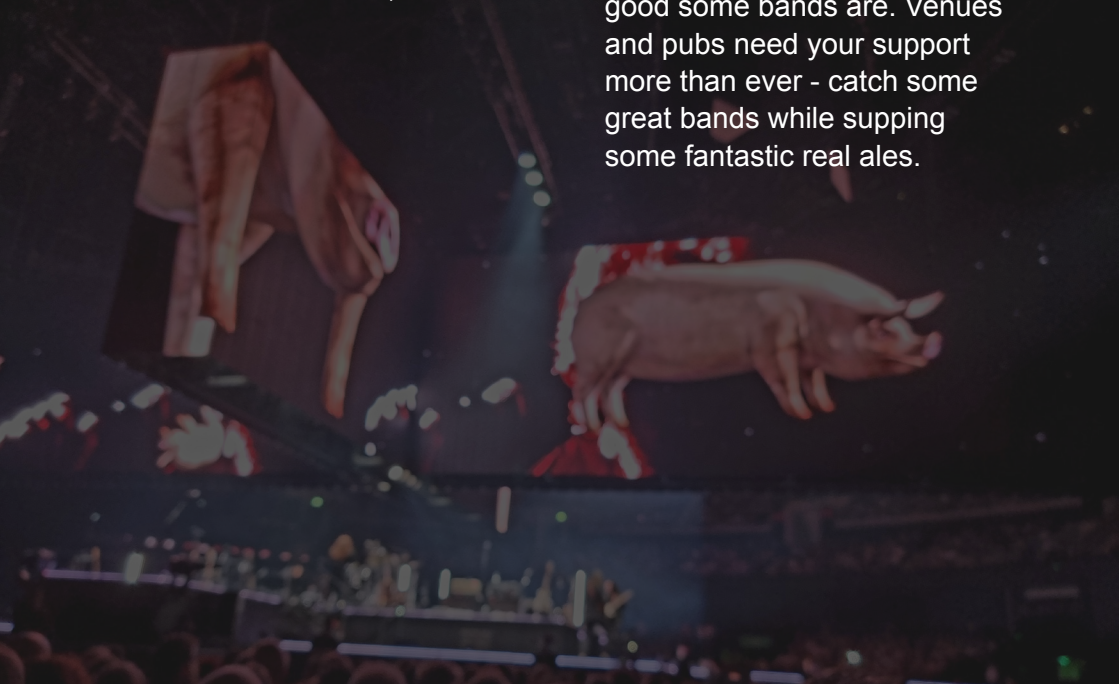
Set 2 started with In the Flesh and Run Like Hell Off the Wall, Deja Vu, Deja Vu reprise, then Is This The Life We Really Want? Then onto Money, Us and Them, Any Colour You Like, Brain Damage, and Eclipse. All from the Dark Side of the Moon, which is

celebrating its 50th anniversary this year.

Two Suns in the Sunset, The Bar, and Outside The Wall brought the show to a close to a most appreciative audience in Glasgow.

Us Chantry Brewery lads from Yorkshire gave this Scotland gig a 10/10. Flying pigs 'n' sheep, and great visuals on the screen. Legendary gigs like these will be gone soon with all the rubbish getting churned out on TV now. Bring back Top of the Pops! Give young bands a chance to be seen worldwide!

Also, if you get the chance, please go support live music in a pub. You will be amazed how good some bands are. Venues and pubs need your support more than ever - catch some great bands while supping some fantastic real ales.





Sheffield Adventure - 4th Mar 2023

An excerpt from Micropub
Adventures Blog



Text & photos by Scott Spencer.
Visit: MicropubAdventures.co.uk

A trip over to Sheffield today.
May take a few visits to cover

everything here but starting today
in Hillsborough and working
back towards the centre. Some
great micropubs and craft bars
alongside a few brewery taps.

Sheffield Tap

First call of the day is to the
Sheffield Tap, located on Platform
1 of Sheffield Railway Station.
This opened in 2009 and the
building was originally the first
class waiting room for Sheffield
Midland Station, built in 1904.

A huge selection of cask and keg
beers are on the bar here. Today,
there were 10 cask beers and 14
keg beers, with a wide variety
of styles.

There is also an on site Micro Brewery, Tapped which opened in 2013 and can be seen from the former dining room which is pretty impressive itself. The beer I had from here today was Mojo, one brewed on site.

A tram journey next to get me out of the town centre and up to Hillsborough. A ticket costs £4.80 and covers me on the whole tram network (most of what I'm covering today can be accessed from the tram).

Brass Monkey

A short walk from Hillsborough Tram Stop brings me to Brass Monkey (passing the three

pubs below on the way). This opened in December 2018 and serves a range of craft beers and artisan gins. Camden Pale on Keg available here alongside a selection of lagers.

Northern Monkey

Next call is down to Northern Monkey, a small bar near the crossroads as Hillsborough.

A really warm, friendly welcome here from a family run bar, and great to chat with some of the locals. Trade was picking up as I left with Sheffield Wednesday playing at home. I started on Abbeydale Absolution before



18th Century pub | Two real fires |
11 Hand pumps | Dog friendly

5 mins walk from bus & railway stations.
X1, X10 & X74 bus stop outside pub from Sheffield.



New York Tavern

84 Westgate, Rotherham,
S60 1BD

Open Times

Mon to Thurs: 2pm to 11pm
Fri & Sat: 12pm to 11pm
Sun: 12pm to 10pm

www.newyorktavern.co.uk

moving onto Bradfield's Brown Cow.

The Beekeeper

Over the road to a newish Micropub called The Beekeeper. A small, one-roomed pub with a small bar to the right as you enter.

A choice of one cask ale (other one had run off), one handpull real cider alongside four craft beers. I went with Abbeydale Deception, a good choice as always.

The Pangolin

Another short stroll over the road to The Pangolin, situated on the platform of Hillsborough Park Supertram. A small, one roomed bar, which again was busy due to the football game.

A choice of five craft keg and two real ales alongside a wide range of cans and bottles to drink in or takeaway. A recent tap takeover from Sureshot Brewery in Manchester explains the number of beers available from them. I went with Small Mans Wetsuit, a tasty pale ale.

Onto the tram again now and a couple of stops down, disembarking at Langsett/Primrose View, and a lovely 12 minute walk up hill (at least the return is downhill).

Walkley Beer Co

After a nice uphill walk, I arrived at Walkley Beer Co, a small corner micropub I last visited in 2018. A great friendly welcome in here!

Five keg beers, two cask beers alongside a cider were available today (aswell as a great range of cans and bottles in the fridges). I went with the sour beer from Pollys Brew Co, Everything's Peachy.

The Raven

A short walk around the corner to 'The Raven' next, a pub co-owned by Loxley Brewery and Wisewood Inn. Fantastic warm welcome here and had a great chat with the bar tender.

Five Loxley Brewery cask beers available on the bar here (a new brewery for me), alongside nine craft beers on keg. I went with Lomas, a tasty five hop pale ale.

Blind Monkey

Another short walk downhill towards the supertram stop brought me to the 'Blind Monkey'. This pub reopened in April 2018 after extensive renovations and looks amazing, both inside and out, with a large beer garden which can be covered if raining.

Five cask beers available on the bar, two from Don Valley Brewery,

two from Thornbridge Brewery, and one from Lincolnshire Craft Beers. I went with 'Green Green Hops of Home' from Don Valley Brewery.

A short walk downhill this time to the supertram stop to board the tram to Infirmary Road.

Heist Brew Co

Heist Brew Co is a short walk from the supertram stop and comprises of two large adjoining rooms with lots of seating, games, food and beers. A very popular place as it was really busy when I arrived mid afternoon.

A great selection of beer from the in-house brewery, along with a great guest selection. I went with 'All Green on the Yellow Front', a tasty Session IPA at 4.5% ABV.

The food offering was from Slap & Pickle. I enjoyed a delicious freshly cooked burger and chips from them. Worth every penny!

Forest

A short stroll from Heist Brew Co uphill brings me to Forest, a corner pub known for being the taphouse for Toolmakers Brewery, which is situated nearby.

Three cask ales available here from Toolmakers Brewery. I went with their pale ale, Battle Axe, a tasty easy drinking pale ale (and another new brewery for me).

St Mars of the Dessert

A taxi ride out to the next bar, as its not really near anywhere else, but situated in the Attercliffe area of Sheffield. A really quirky bar with table service and a shop/ bottle&can shop towards one end.

A very interesting selection of keg beers, including several Belgian style beers. I went with Mr Sisyphus Cherry Stingo at 5.1% ABV. A tart and sour cherry beer.

Triple Point Brewery

My last call of the evening was to Triple Point Brewery, a short 10 minute walk from Sheffield railway station. The building was formerly a carpet showroom and then Sentinel Brewery. A father and son obtained the premises from the liquidator of Sentinel Brewery.

A choice of 12 keg beers alongside two cask beers (usually three). Also a wide range of cans and bottles from the brewery, which is located next to the seating area at the back of the premises. Another sour beer for me, Bluesy, a tasty blueberry, cinnamon and lime sour beer.







Fancy a pie with your pint?



Pre-order your PUKKA pies
online for collection at
www.etfshop.co.uk

What happened in 1993?

The year Rotherham CAMRA began



Listicle curated by Beck Warburton

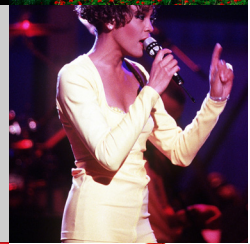
1

The Queen gave approval for Buckingham Palace to open its doors to the public for the first time



2

Whitney Houston's 'I will always love you' from the soundtrack of The Bodyguard was the only song to sell over a million in 1993



3

Mr Blobby from Noel's House Party became Xmas No.1



4

Directed by Steven Spielberg, Jurassic Park grossed over \$900 million worldwide and won three Academy Awards



5

Rebecca Stephens was the first British woman to climb Everest



6

Manchester United became the 1st Champions of the new FA Premier League 1992 (close enough to '93)



7

The European Union was born



8

The National Lottery was launched on the 19th November 1993 by the UK Government to raise money for charity



9

Audrey Hepburn died in 1993



10

The last episode of the sitcom Cheers aired



11

Nelson Mandela and F.W. de Klerk received the Nobel Peace Prize during October of 1993



12

Space Shuttle Endeavour mission to repair an optical flaw in the Hubble Space Telescope



13

Ty Warner USA launches the first Beanie Babies at the World Toy Fair



14

The Eiffel Tower welcomed its 150,000,000th visitor



15

A postage stamp commemorating Elvis Presley went on sale



AND

The birth of our Editor, Sam Warburton.



Pub Quiz

Pst! Answers at the back of this magazine.

General Knowledge

1. Which city is known as the 'Eternal City' because of its rich history and cultural heritage?
2. Which animal has the longest lifespan of any mammal on earth?
3. What is the largest island in the world by land area?
4. The world's oldest university that is still in operation is located in which country?
5. What is the smallest country in the world by land area?
6. What is the highest mountain range in North America?
7. What is the name of the first satellite ever launched into space?
8. What is the smallest planet in our solar system?
9. What is the largest desert in the world?
10. Who was the first woman to win a Nobel Prize?



Send this pub quiz to your friends & family

Scan the QR code to get the digital version sent to your inbox every quarter.



Food & Drink

1. Which traditional Indian dish is made with basmati rice, spices, and meat or vegetables, often served with raita and naan bread?
2. Name the fermented tea beverage that originated in China and is now popular in many countries around the world.
3. Which traditional Japanese soup is made with tofu, seaweed and a paste of the same name?
4. What is the name of the traditional Mexican dish made with a corn or flour tortilla, filled with various ingredients, and then folded or rolled up?
5. What is the name of the Italian dish made with Arborio rice, broth, and various ingredients, such as mushrooms, seafood, or vegetables?
6. Name the fermented milk drink that originated in the Caucasus region and is now popular in many countries around the world?
7. What is the name of the Middle Eastern dip made with chickpeas, tahini, lemon juice, and garlic?
8. What is the name of the Chinese dish made with stir-fried noodles, vegetables, and meat or seafood, often served in a savory sauce?
9. A cocktail which takes its name from an island city state in southeast Asia
10. If you were served a Châteaubriand in a restaurant, what type of food would it be?

Useful contacts

Travel information: travelsouthyorkshire.com

Rotherham Trading standards: rotherham.gov.uk/trading-standards

Love beer?

Love pubs?



Campaign for Real Ale

From as little as **£28.50[†]** a year. That's less than a pint a month!

Includes **£30^{**}** Real Ale Cider & Perry Vouchers

CAMRA Membership is for you!

We're leading the fight to keep pubs alive and thriving in every community, serving quality ales and ciders.

Find out more camra.org.uk/joinup

Or enter your details and complete the Direct Debit form below and you will receive 15 months membership for the price of 12 and save £2 on your membership subscription

Alternatively you can send a cheque payable to CAMRA Ltd with your completed form, visit www.camra.org.uk/joinup, or call **01727 798440**. * All forms should be addressed to Membership Department, CAMRA, 230 Hatfield Road, St Albans, AL1 4LW.

Your details:

Title Surname

Forename(s)

Date of Birth (dd/mm/yyyy)

Address

..... Postcode

Email address

Daytime Tel

Partner's Details (if Joint Membership)

Title Surname

Forename(s)

Date of Birth (dd/mm/yyyy)

Direct Debit Instruction

Please fill in the whole form using a ball point pen and send to: Campaign for Real Ale Ltd, 230 Hatfield Road, St. Albans, Herts AL1 4LW
Email: membership@camra.org.uk Telephone: 01727 867201

Name(s) of Account Holder

Billing Address

Bank or Building Society Account Number

Branch Sort Code

Postcode

Payments will show as CAMRA Membership on your bank statement.

I understand that CAMRA has partnered with Stripe, who collects Direct Debits on behalf of CAMRA and confirm that I am the account holder and the only person required to authorize debits from this account.

Signature



Campaign for Real Ale

Direct Debit Non DD

	Direct Debit	Non DD
Single Membership (UK)	£28.50 <input type="checkbox"/>	£30.50 <input type="checkbox"/>
Under 26 Membership	£20.00 <input type="checkbox"/>	£22.00 <input type="checkbox"/>
Joint Membership (At the same address)	£36.50 <input type="checkbox"/>	£38.50 <input type="checkbox"/>
Joint Under 26 Membership	£28.00 <input type="checkbox"/>	£30.00 <input type="checkbox"/>

Please indicate whether you wish to receive **BEER** by email OR post: Email Post

I wish to Opt-in to General Communications Branch Communications

Concessionary rates are available only for Under 26 Memberships.

I wish to join the Campaign for Real Ale, and agree to abide by the Memorandum and Articles of Association which can be found on our website.

Signed

Date

Applications will be processed within 21 days.



This Guarantee should be detached and retained by the payer.

The Direct Debit Guarantee

- This Guarantee is offered by all banks and building societies that accept instructions to pay Direct Debits.
- If there are any changes to the amount, date or frequency of your Direct Debit, Stripe will notify you 2 working days in advance of your account being debited or as otherwise agreed. If you request Stripe to collect a payment, confirmation of the amount and date will be given to you at the time of the request.
- If an error is made in the payment of your Direct Debit, by Stripe or your bank or building society you are entitled to a full and immediate refund of the amount paid from your bank or building society.
- If you receive a refund you are not entitled to, you must pay it back when Stripe asks you to.
- You can cancel a Direct Debit at any time by simply contacting your bank or building society. Written confirmation may be required. Please also notify us. Setup of Direct Debit Instruction with Stripe on behalf of CAMRA.

[†]Price of single membership when paying by Direct Debit. ^{**}Calls from landlines charged at standard national rates, cost may vary from mobile phones. New Direct Debit members will receive a 12 month supply of vouchers in their first 15 months of membership. The data you provide will be processed in accordance with our privacy policy in accordance with the General Data Protection Regulations.

Quiz answers

General Knowledge

1. Rome, Italy
2. The Bowhead Whale
3. Greenland
4. Morocco - The University of Karueein was founded in 859 AD in the city of Fez and is recognised by UNESCO as the oldest degree-granting institution in the world.
5. Vatican City
6. The Rocky Mountains
7. Sputnik 1
8. Mercury
9. The Sahara
10. Marie Curie

Food and Drink

1. Biryani
2. Kombucha
3. Miso
4. Taco
5. Risotto
6. Kefir
7. Houmus
8. Chow Mein
9. Singapore Sling
10. A thick fillet steak



Photo credit: Daniel Thompson

Calling all Rotherham Pubs

We need your help

- Want to advertise?
- Be featured?
- Have an idea for the magazine or Rotherham CAMRA branch?
- Offer CAMRA members discount and want to be included on Rotherham CAMRA's website list?
- Receive copies of Inn Touch for your pub goes for free?

Get in touch

Email Sam at

SamWarburton.

ContentCreator@gmail.com



Chantry

BREWERY

CHANTRY BREWERY TAP BAR

Unit 2, Callum Court, Parkgate, Rotherham, S62 6NR

OPENING TIMES

Friday 5pm to late
Saturday 4pm to late

Your favourite Chantry ales,
spirits & mixers at the bar.
Plus regular live music.

